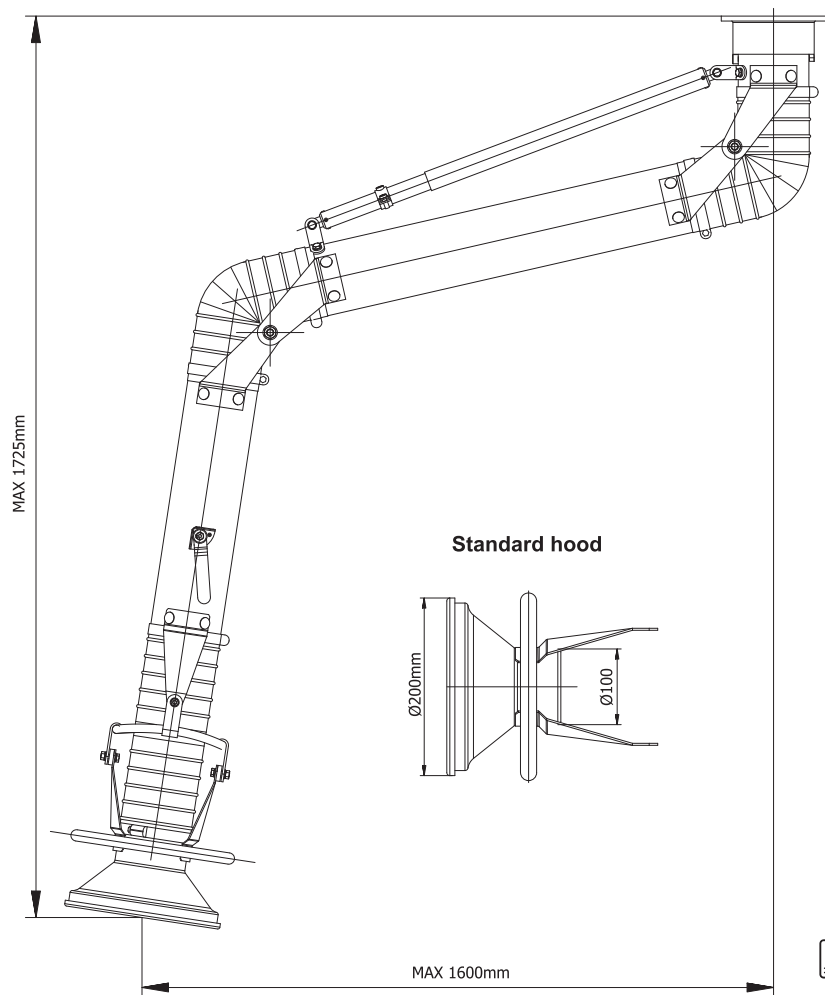
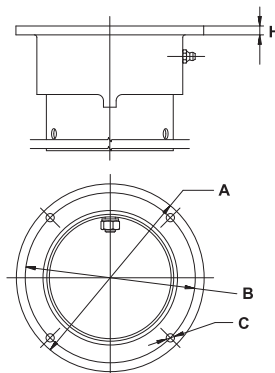


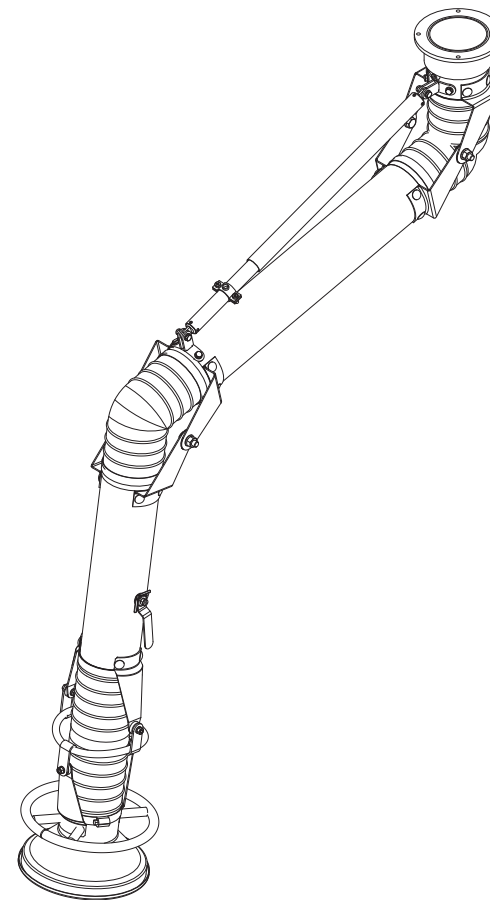
Product:	Stainless steel Oskar fume extraction arm Ø100 - hanging model	
Index:	W02-SS-1015	



### Oskar Fume Arm Mounting Flange



H = 7mm  
 A = Ø148mm  
 B = Ø134mm  
 C = 4 holes Ø6,5 mm



- Accessories and options:**
- P07-01-9502 - Mounting bracket Ø100
  - P07-02-9501 - Connection flange Ø100
  - P02-80-0010 - Grounding option

- Features:**
- stainless steel capture hood with air diverter and grab handle all around the hood
  - aluminum hood joints painted black
  - middle and swivel steel joints painted black
  - stainless and aluminium mounting swivel (duct inner part of the swivel fully stainless)
  - smooth stainless steel tubes
  - standard stainless steel built-in damper
  - standard delivery with black PVC elastic hoses (temperature resistance up to 80°C)
  - stainless steel grade 304

