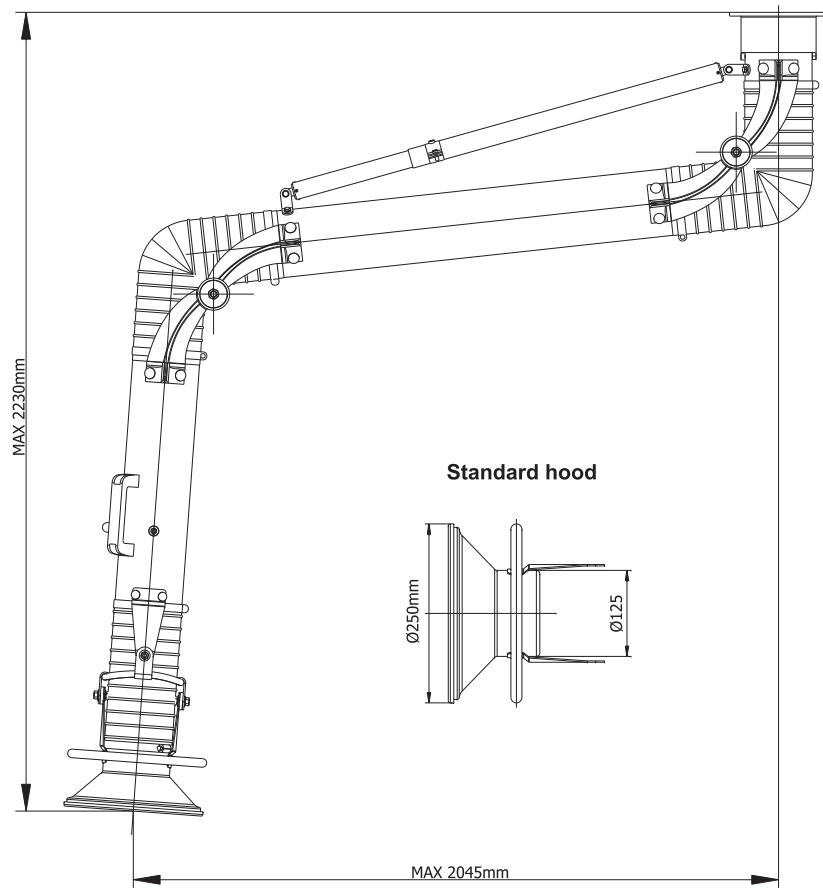
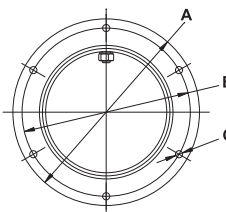
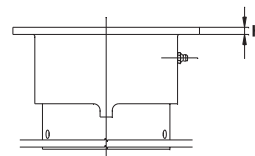


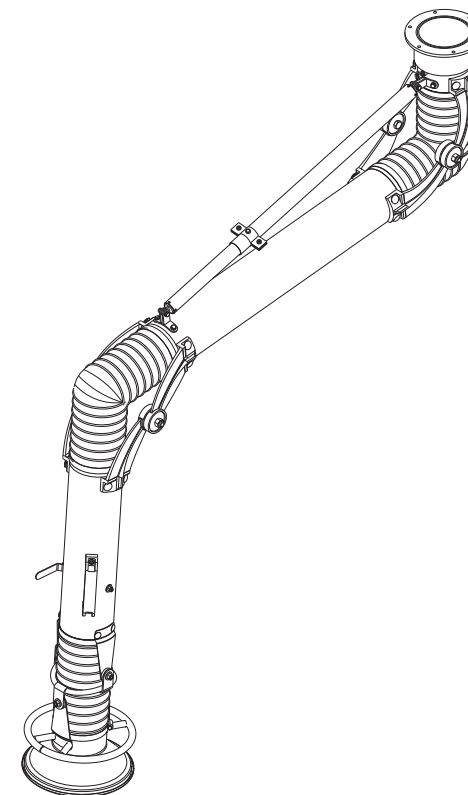
Product:	Stainless steel Oskar fume extraction arm Ø125 - hanging model	
Index:	W02-SS-1220	



**Oskar Fume Arm
Mounting Flange**



H = 7mm
 A = Ø183mm
 B = Ø165mm
 C = 4 holes Ø7mm



Accessories and options:

- P07-01-9503 - Mounting bracket Ø125
- P07-02-9501 - Connection flange Ø125
- P02-80-0010 - Grounding option

Features:

- stainless steel capture hood with air diverter and grab handle all around the hood
- aluminum hood joints painted black
- middle and swivel steel joints painted black
- stainless and aluminium mounting swivel (duct inner part of the swivel fully stainless)
- smooth stainless steel tubes
- standard stainless steel built-in damper
- standard delivery with black PVC elastic hoses (temperature resistance up to 80°C)
- stainless steel grade 304

